

ANTIBIOTIC  
REDUCTION

PRODUCTION  
EFFICIENCY



## Presan<sup>®</sup>-FX

# Improves gut health and production in swine



### Economic impact

The health status of animals strongly influences the farm's financial results

### Why Presan<sup>®</sup>-FX?



### Safe and efficient production

Pressure on microbial control and cost efficiency need a robust gut health



### Presan-FX

Improves swine performance in antibiotic-free production systems



### BUSINESS CHALLENGE

#### Do not let your profitability be harmed

The health status of a pig farm has a strong influence on the farm's financial results. Gut health is of critical importance for swine performance. Having stable, diverse microbiota and a strong gut wall are important for gut health and animal performance, especially in antibiotic-reduced or antibiotic-free production systems.



#### An integrated approach to improve gut health

- An optimal microbial balance is essential to **enhance digestive efficiency and support fecal consistency in pigs**
- A stable villi surface in the intestine will **maximise nutrient uptake, resulting in improved zootechnical performance and lower feed costs**
- An optimal health status of pigs achieves maximum performance **in an antibiotic-free production system**

### Improving swine gut health: Trouw Nutrition's integrated strategy

Presan®-FX is part of the Swine Gut Health programme that focuses on microbial control, decreasing antibiotic use and enhancing animal performance. Presan-FX improves gut health throughout the swine production chain. This enhances swine performance and supports the reduction of antibiotic use in all production phases.

### Improving performance with Presan®-FX

#### Proven results

A large number of studies conducted around the world have shown Presan-FX to be effective. Trouw Nutrition Research & Development supports all studies conducted.

### Recommended use

Presan-FX can be incorporated into the feeding program via premixes or feed formulation.

#### Inclusion level:

##### Sows:

- 1.0 kg/t of complete feed

##### Weaned piglets:

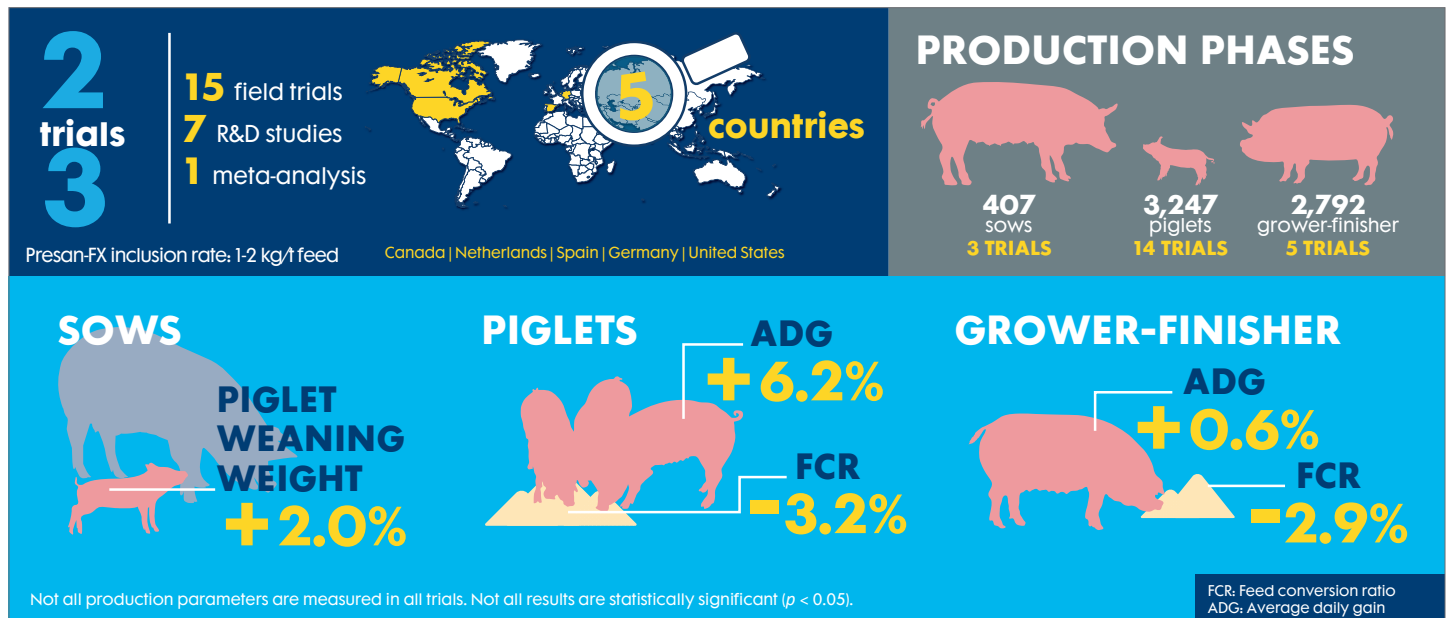
- 2.0 kg/t of complete feed

##### Growing pigs (25-40kg):

- In normal situations: 1.0 kg/t of complete feed
- Under stress situations: 2.0 kg/t of complete feed

##### Finisher pigs (40kg until slaughter):

- 1.0 kg/t of complete feed



Learn more visit [Selko.com](https://www.selko.com)

### Summary

**Product:** Presan®-FX

**Benefit:** Improves swine performance, supporting antibiotic-free production

**Use for:** Swine

**Programme:** Antibiotic Reduction / Production Efficiency

**Ask your Trouw Nutrition representative how Presan-FX can improve your swine production and help you to reduce the need for antibiotics.**

**Disclaimer:** The information in this document is believed to be correct as of the date issued. Given the variety of factors that can affect the use of a Selko product, the user is responsible for determining whether the Selko product and dosage is fit for a particular purpose and suitable for user's method of use. Selko B.V. or any of its affiliates makes no warranties, including but not limited to warranty of merchantability or fitness for a particular purpose. Product labelling and associated claims may differ based on government requirements. All quotations, orders, confirmations and transactions are subject to our General Conditions of Sale ([www.nutreco.com](http://www.nutreco.com)). The applicability of any other terms and conditions is explicitly rejected. This trial is supported by Trouw Nutrition R&D. © Trouw Nutrition. The trademarks shown in this document are registered in The Netherlands, The USA and other countries. These trademarks are owned by Selko B.V. or Micronutrients USA LLC or Trouw International B.V. IntelliBond products are registered as Selko IntelliBond in The Netherlands, and other countries.